

Company Information

Company

Corporate name	Core Concept Technologies Inc.
Establishment	September 17, 2009
Director	<b>Directors</b> Takeshi Kaneko (Representative Director, President and CEO) Kazuaki Nakajima (Director, Vice President, CFO)  <b>Directors who are Audit &amp; Supervisory Committee Members</b> Shohei Ueda (Full-time) Takuo Hirose (Part-time) Masaya Suzuki (Part-time) Eri Nakajima (Part-time)
Business description	Support for digital transformation Support for staffing of IT personnel
Licenses and permits, etc.	PrivacyMark: Registration Number 21000839, General Worker Dispatching Undertaking: Registration Number 13-310532 Date of license: June 1, 2018, Method of determining conditions: Labor-management agreement

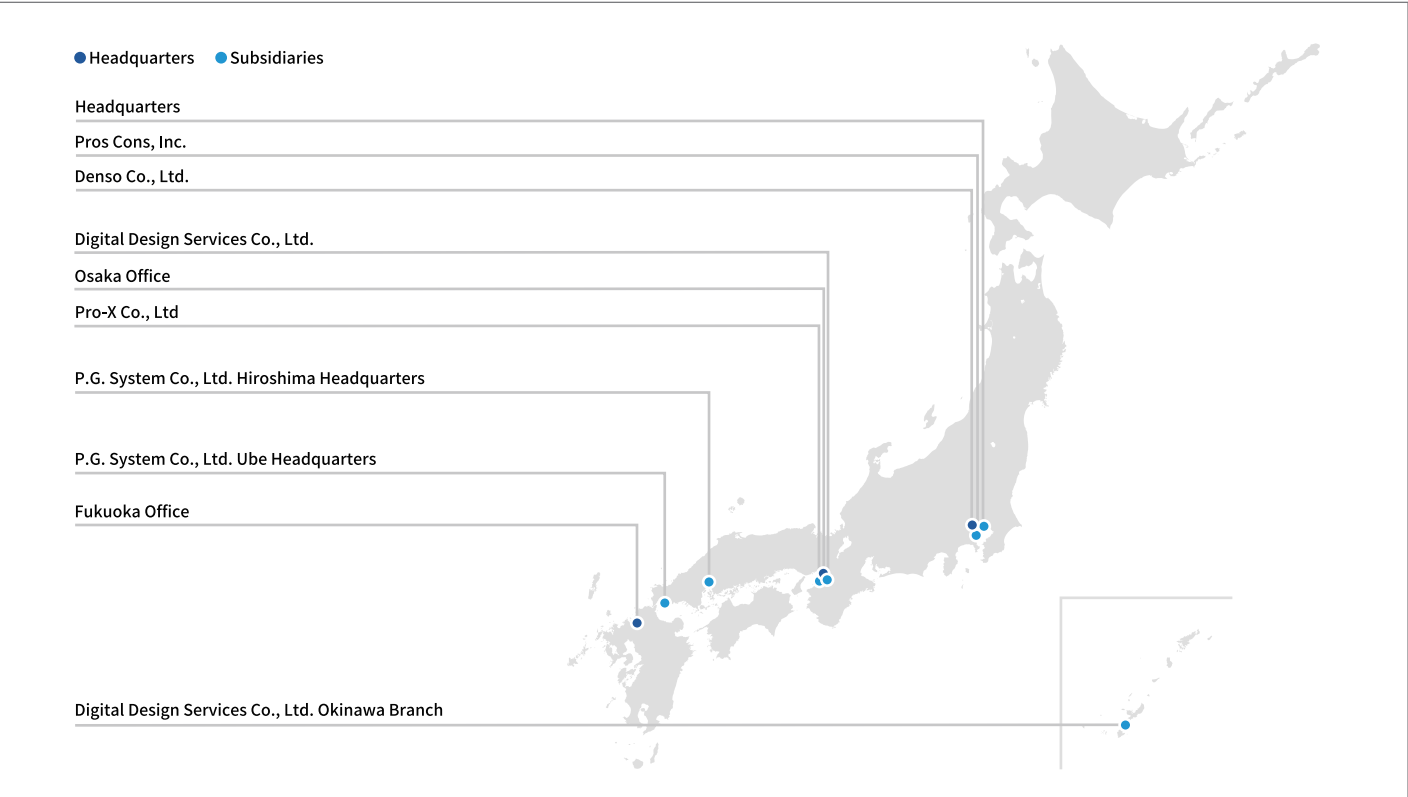


Location

- Head Office**  
11th floor of DaiyaGate Ikebukuro, 1-16-15 Minami Ikebukuro, Toshima-ku, Tokyo 171-0022 Japan
- Osaka Office**  
3rd floor of Dai-san Nakajima Building, 5-11-10 Nishi Nakajima, Yodogawa-ku, Osaka-shi, Osaka 532-0011 Japan
- Fukuoka Office**  
11th floor of Hakata-ekimae City Building, 1-9-3 Hakata-ekimae, Hakata-ku, Fukuoka-shi, Fukuoka 812-0011 Japan

Subsidiaries

- P.G. System Co., Ltd.**  
Ube Headquarters  
2nd floor of Taiyo Seimei Ube Building, 18-10 Matsushima-cho, Ube-shi, Yamaguchi 755-0042, Japan
- Hiroshima Headquarters  
6th floor of Eight Valley Otemachi, 3-8-5 Otemachi, Naka-ku, Horishima-shi, Hiroshima 730-0051, Japan
- Denso Co., Ltd.**  
6th floor of Komoriyama Building, 15-1 Omiya-cho, Saiwai-ku, Kawasaki-shi, Kanagawa 212-0014, Japan
- Pros Cons, Inc.**  
Room A, 5th floor of Iida Building, 1-26-15 Tomioka, Koto-ku, Tokyo 135-0047, Japan
- Pro-X Co., Ltd.**  
5th floor of Aoyama Building, 2-1-31 Ebie, Fukushima-ku, Osaka-shi, Osaka 553-0001, Japan
- Digital Design Services Co., Ltd.**  
Headquarters  
12th floor of H20TOWER, 2-5-2 Nishitenma, Kita-ku, Osaka-shi, Osaka 530-0047, Japan
- Okinawa Branch  
14-17 Suzaki, Uruma-shi, Okinawa 904-2234, Japan



Our Purpose

Driving sustainable industrial development through the power of our technology and people



About US

Solving issues in the IT industry through two businesses

What We Do

Create the Next-Gen of the IT Industry

We envision a future in which each industry develops sustainably and will make this vision real to create a sustainable society through the evolution of our products and people. We contribute to the sustainable development of industry by reforming our clients' business processes and value chains through digital transformation. Along with growing sales and improving profitability, we solve issues such as reducing environmental impact through the improvement of asset and energy efficiency, eliminating labor shortages through improved labor productivity, and passing on know-how from veteran employees. By utilizing "Ohgi," an extensive business partner network made mainly of small and medium-sized companies, we contribute to the reduction of the adverse effects of the multiple contracting structure in the Japanese system integration industry, such as the uneconomical middle margins as well as the regional income disparity of IT human resources.

Our Values

Think Big, Act Together.

Think Big

Exchange ideas freely and move away from conventional wisdom and fixed concepts. With firm determination, we shall find the new value the world is searching for.

Act Together

We are supported by many stakeholders, including our customers and employees. Act Together to respond to their understanding and trust.

CCT WAY

Ownership

We have a sense of ownership in all things.

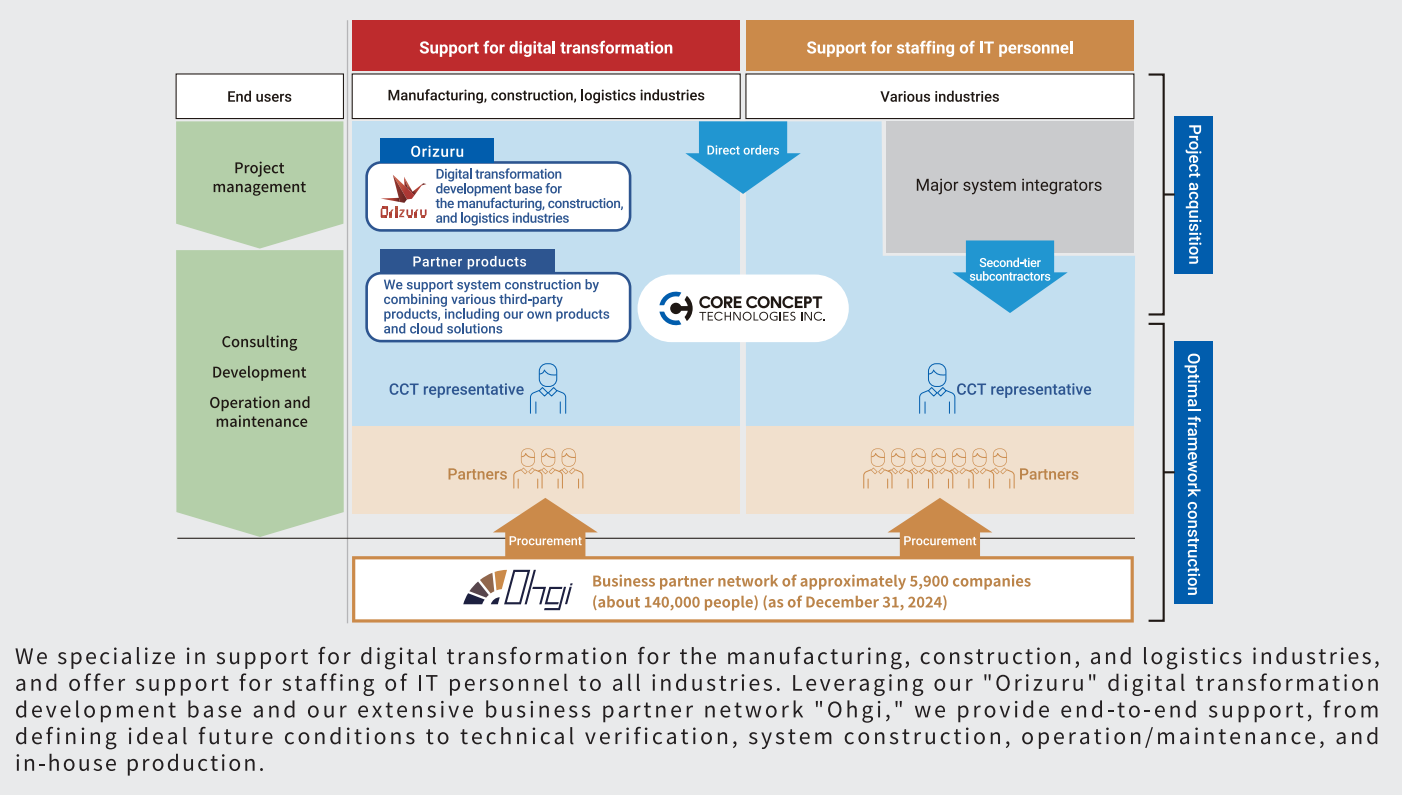
Customers rule

We base decisions on providing value to customers rather than convenience for the company.

Logic × passion

We act with a balance between logic and passion or emotion.

In Japan's IT industry, a pyramid-shaped multi-tiered subcontracting structure exists, with major system integrators as primary contractors, followed by second-tier and third-tier subcontractors. This structure limits small- to medium-sized IT companies to the role of a labor supply source for system development, leading to issues such as a lack of economic competitiveness due to intermediate margins and income disparities among engineers. Furthermore, with the promotion of digital transformation becoming an urgent issue across all industries, digital transformation personnel are concentrated in major system integrators and consulting firms, preventing operating companies from independently and continuously achieving digital transformation and forcing them to rely on external IT vendors, which creates a serious management challenge. Our group aims to transform society into one in which companies promote digital transformation autonomously by involving small- and medium-sized IT companies all over Japan through its two businesses (support for digital transformation and support for staffing of IT personnel), and by redressing the multiple contracting structure.



We specialize in support for digital transformation for the manufacturing, construction, and logistics industries, and offer support for staffing of IT personnel to all industries. Leveraging our "Orizuru" digital transformation development base and our extensive business partner network "Ohgi," we provide end-to-end support, from defining ideal future conditions to technical verification, system construction, operation/maintenance, and in-house production.

Our Strengths

Corporate Profile

Strength 1

Retrofit

- Orizuru supports a wide variety of machinery and equipment
- Leverages our hardware expertise to digitally adapt older equipment
- Separates manual and automated processes

Strength 2

Years of experience in manufacturing × Digital transformation

- Involved in digital transformation for manufacturing since our founding
- Capable of constructing business processes with a comprehensive view of both management and on-site perspectives
- Able to engage in specialized conversations on the manufacturing floor

Strength 3

Wide range of solutions

- Comprehensively addresses customer needs through integration with Orizuru and systems such as Salesforce and SAP
- Maintains the uniqueness of customer companies through customization based on their business flows





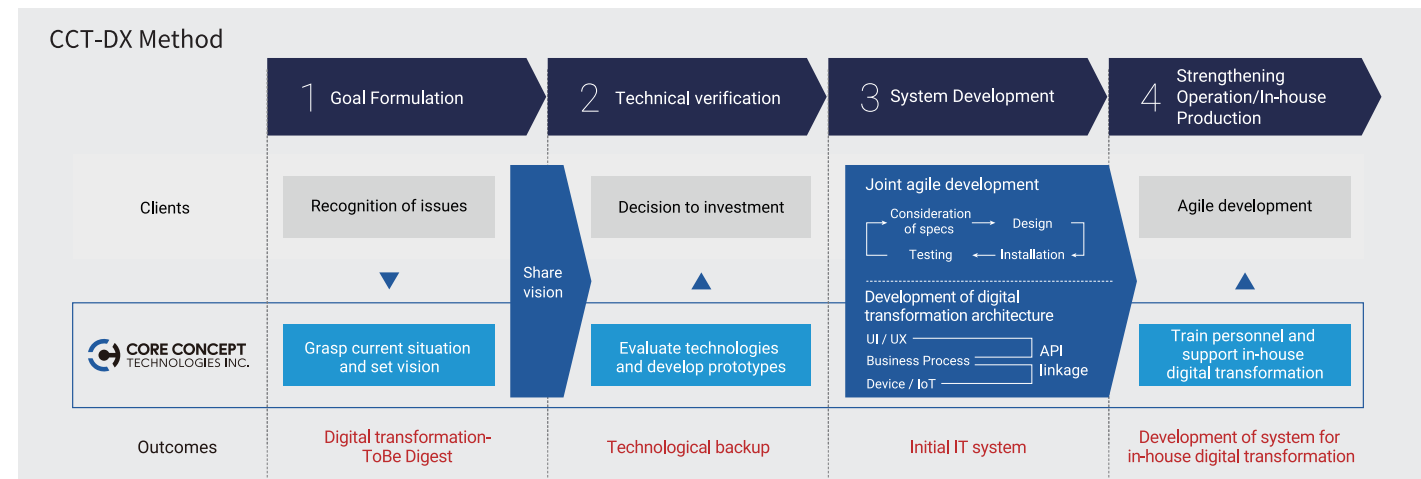
Strengths in the manufacturing, construction, and logistics industries

## Support for digital transformation

We leverage deep knowledge of manufacturing and broad technical capabilities in the digital field to achieve digital transformation



The Group supports digital transformation, primarily for customers in the manufacturing, construction and logistics industries. We contribute to business growth, profit growth, and business continuity for our clients by leveraging our in-depth knowledge of manufacturing and extensive technical capabilities in the digital field to identify and solve issues such as inefficient business operations and business operations that are highly dependent on individual skills and reliant on veteran personnel. In doing so, using our proprietary digital transformation support methodology enables us to accompany our clients through the process from formulation of the post-digital transformation vision to technical verification, system construction, operation and maintenance, and in-house production. In addition, we achieve digital transformation swiftly and at low cost by utilizing the “Orizuru” digital transformation development base that streamlines construction and system operation.



“Orizuru” digital transformation development base

We implement proprietary systems in our customers’ competitive areas, and accumulate and evolve the knowledge gained as standard features in “Orizuru.”

Offered solutions



Suitable for all industries

## Support for staffing of IT personnel

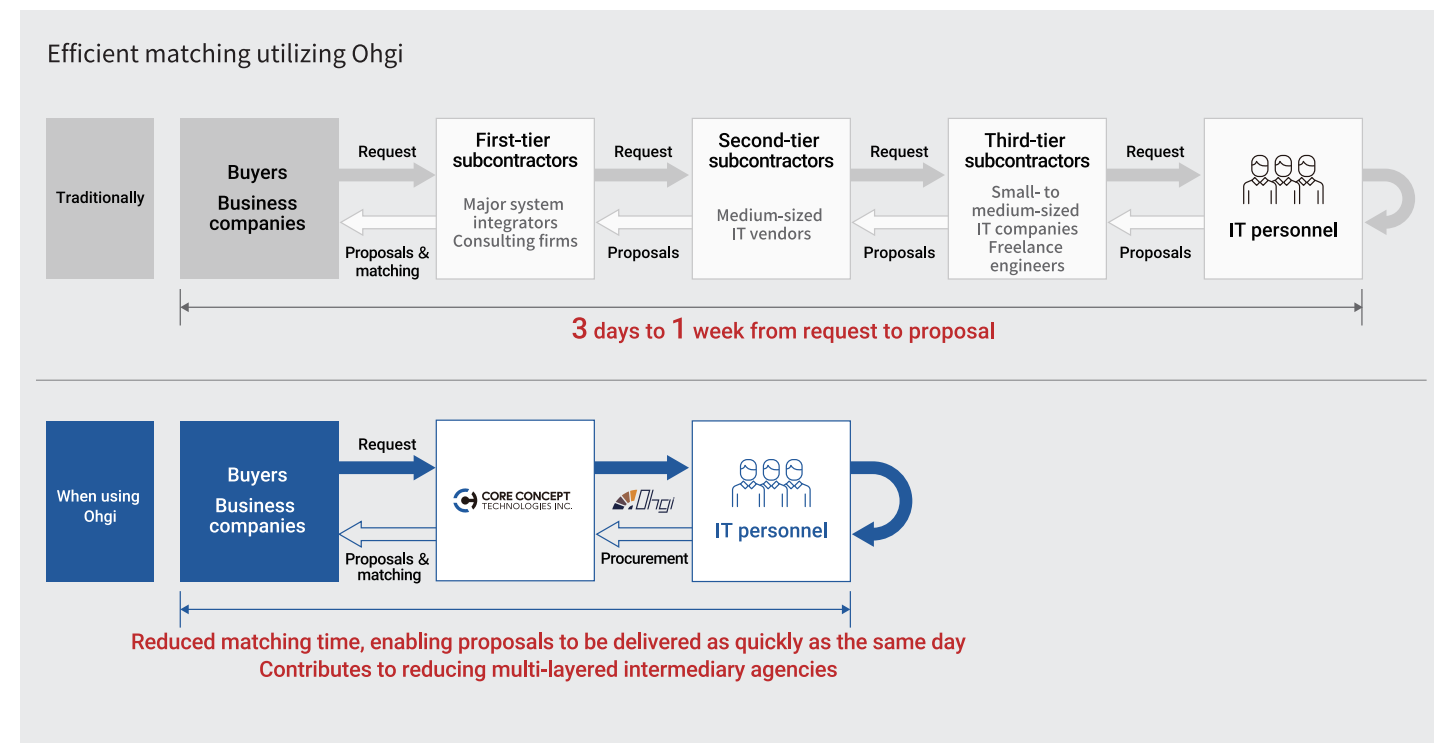
We leverage our extensive business partner network “Ohgi” to achieve efficient matching between those receiving and placing orders



The Group supports client IT staffing demands for business companies, major system integrators, and consulting firms. Our business partner network “Ohgi” has enabled speedy staffing of IT personnel. We can find the most suitable IT personnel for clients’ projects and establish a framework for delivery utilizing “Ohgi,” a database with which we can network and approach about 5,900 small- and medium-sized IT enterprises (about 140,000 IT personnel)\*.

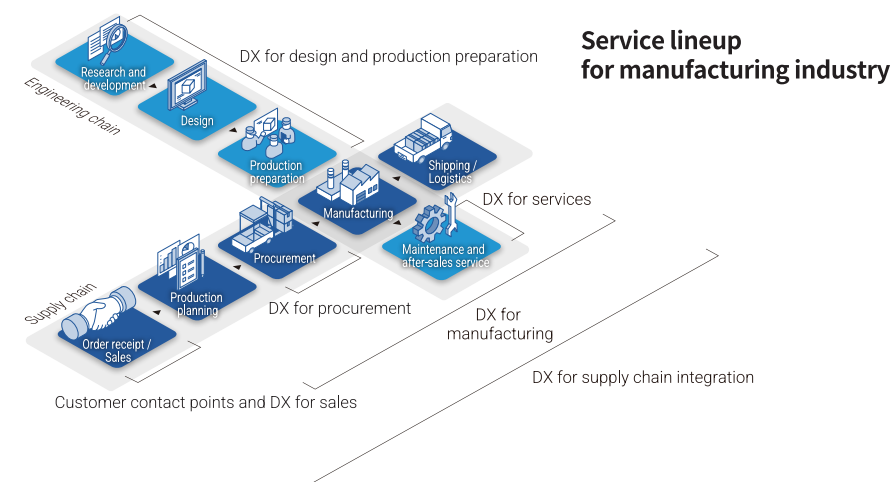


\* As of December 31, 2024

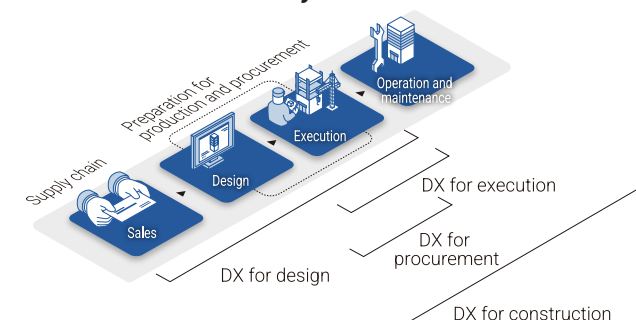


## Industry-specific solutions for digital transformation support

We began by supporting digital transformation in the manufacturing industry, leveraging our 3D shape processing technology and knowledge of manufacturing, and have since expanded our services to the construction and logistics industries.



### Service lineup for construction industry



### Service lineup for logistics industry

